



KING OF THE MOUNTAIN Owner's Manual

www.aquaglide.com

version 3.1 - 3.01.2024

ENGLISH

KING OF THE MOUNTAIN



Shown with Accessory Slide,Sold Separately.

Capacity: 4 People

Dimensions:

L- 8.2 ft (2.50 m)

W- 8.9 ft (2.70 m)

H- 6.6 ft (2.02 m)

Minimum Water Depth: 6.3 ft (1,91 m)

Included:

1x King of the Mountain

1x Storage Wrap

1x Pressure Gauge

1x Repair Kit

WARNINGS & CAUTIONS



**STOP! READ THIS OWNER'S MANUAL CAREFULLY
BEFORE USING THIS PRODUCT!**



It is the owner's responsibility to read the user's manual and instruct all users in the safe operation of these products. This Owner's Manual is intended to alert you to some of the potentially dangerous conditions that can arise in the use of this product.

WARNINGS

Use of this product and participation in the sport involves INHERENT RISKS of SERIOUS INJURY or DEATH. User ASSUMES ALL RISK of injury or death.

- ALWAYS wear a properly fitted USCG type III / Level 70N, ISO/CE or other agency approved Life Jacket or Personal Flotation Device (PFD) as required in area of use.
- NEVER use while under the influence of alcohol or drugs.
- NEVER leave children unattended. ONLY use under competent adult supervision.
- Not intended for use by children under 5 years of age.
- NEVER place wrists or feet through handles.
- NEVER use in water less than the specified minimum depth for this product.
- NEVER use with less than the specified minimum safe distance away of watercraft, shore, docks, pilings, or other obstacles.
- NEVER swim under this product.
- NEVER dive from this product.
- NEVER exceed the manufacturer's recommended number of users for this product.
- NEVER add any hardware or other attachments not otherwise supplied by the manufacturer.
- This product is not a personal flotation device.
- NEVER use this product on land.
- ALWAYS read User's Manual before use.

CAUTIONS

This user's Manual is intended to alert you to some of the potentially dangerous conditions that can arise in the use of this product. Other, unforeseen risks may exist, so always use caution and common sense. Please contact the dealer or manufacturer of this product if you have any questions about proper assembly, operation, or safe use of this product.

- Always read this user's manual carefully before use and follow the instructions.
- Always limit use to swimmers only. This item provides no protection against drowning.
- Always be aware of potential dangers in the surrounding environment.
- Always take all reasonable precautions in using this product and instruct all users about safe guidelines prior to use.
- Always maintain at least the specified minimum safe distance away from pool edge, boats, docks, or other hard obstructions.
- Always maintain adequate vertical clearance above this item, particularly when used in indoor pools.

- Always inflate each air chamber to the specified working pressure before use. Under-inflation can cause injury due to instability.
- Always ensure connections are tight and that there is no gap between items.
- Regularly check mooring lines and connecting straps. Always replace any portion showing signs of wear.
- Never use without proper anchoring and adequate minimum water depth for this product.
- Never exceed the maximum weight or user capacity stated for this product.
- Always evenly distribute weight from users or gear to prevent possible capsizes.
- Never attempt somersaults while using this item. Head and/ or neck injuries can cause serious injury, paralysis, or death.
- Never follow other climbers – an accidental fall may cause collision.
- Never follow others immediately into the water – wait until water is clear.
- Always remove personal items such as rings, watches or other sharp objects before use.
- Never use at night, in low-light, or in other adverse conditions.
- Never use in recreational pools. Supervised use in public or commercial pools is acceptable.
- Always secure the product when not in use to prevent access by any other users.
- Always ensure correct anchoring of the product prior to use.
- Always lubricate products with continual water flow or other suitable methods to limit risk of skin burns. Be aware that friction may cause skin burns when attempting to slide.

AQUAPARK DISCLAIMER

The safety of our customers and their guests is our highest priority. Careful thought goes into the design of our aquapark components, connection points and configurations to assure maximum safety and enjoyment. Consequently, Aquaglide Lakefront and Aquapark products are not authorized for use in combination with products or attachments from any other manufacturer. Aquaglide product combinations must be authorized or approved in advance by the manufacturer. Use of Aquaglide products in combination with products from any other manufacturer and/ or product arrangements not previously approved by Aquaglide may result in increased risk of entrapment, injury, or death.

SALTWATER WARNING

Prolonged exposure to salt water can damage and/or shorten the expected lifetime of this product. The marine environment includes many damaging elements including corrosion, abrasion, and damage from marine life such as barnacles. Regular cleaning and rinsing with fresh water can reduce these risks. A PVC-safe anti-fouling paint should be used to help protect this product against marine growth. Damage caused by exposure to salt water is not covered by warranty.

KING OF THE MOUNTAIN

Compliant with ISO 25649: 2017 -1, -2, -6, Class D
REACH, ASTM F/24

WARNING
ADVERTENCIA
ATTENTION
WARNUNG
WAARSCHUWING



No protection against drowning.
No protege contra ahogamiento.
Pas de protection contre la noyade.
Kein Schutz vor Ertrinken.
Geen bescherming tegen verdrinking

MANDATORY ACTION
ACCION OBLIGATORIA
ACTION OBLIGATOIRE
OBLIGATORISCHE
AKTION
VERPLICHTE ACTIE



Swimmers only.
Solo nadadores.
Nageurs seulement.
Nur schwimmer.
Alleen zwemmers

PROHIBITION
PROHIBICIÓN
INTERDICTION
VERBOT
VERBOD



Only for children above 5 years old.
Solo niños mayores de 5 años.
Seulement pour les enfants de plus de 5 ans.
Nur für Kinder über 5 Jahre alt.
Alleen voor kinderen ouder dan 5 jaar



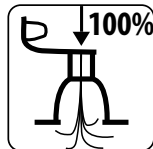
Do not jump if water is not clear.
No saltar si el agua no está despejada.
Ne pas sauter si l'eau n'est pas claire.
Springe nicht, wenn Wasser nicht klar ist.
Spring niet tenzij het water helder is



No diving.
No bucear.
Ne pas plonger.
Nicht tauchen.
Niet duiken



Do not swim under the product.
No nade bajo el producto.
Ne pas nager sous le produit.
Schwimmen Sie nicht unter dem Produkt.
Zwem niet onder het product



Fully inflate.
Inflar completamente.
Gonflez complètement.
Vollständig aufpumpen
Volledig opblazen



Max. users.
Max. usuarios.
Max. utilisateurs.
Max. Benutzer.
Max. aantal gebruikers



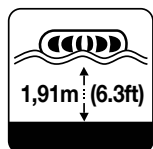
Size range
Rango de tamaño
Gamme de taille
Größenbereich
Maatbereik



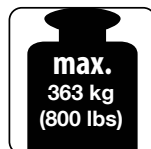
Always supervise children.
Siempre supervise a los niños.
Toujours superviser les enfants.
Immer Kinder betreuen.
Houd altijd toezicht op kinderen



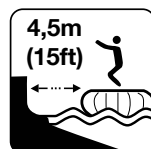
Always wear life jacket.
Siempre use chaleco salvavidas.
Toujours porter un gilet de sauvetage.
Tragen Sie immer Rettungsweste.
Draag altijd een reddingsvest



Minimum water depth.
Profundidad mínima.
Profondeur minimale de l'eau.
Minimale Wassertiefe.
Minimale waterdiepte



Max. load capacity.
Max. Capacidad.
Max. capacité de chargement.
Max. Belastbarkeit.
Max. laad capaciteit



Ensure safe distance
Asegurar la distancia de seguridad
Assurer une distance de sécurité
Sichere Distanz sichern
Zorg voor veilige afstand

ASSEMBLY

Inflatable Products – Aquaglide makes some of the highest quality inflatable products in the world. With proper care and maintenance, our products are expected to last for years under normal use. We list important tips and instructions below. If unsure about any point, please reach us through our website at Aquaglide.com/contact-us.

Note: see Anchoring instructions (below) before inflating this item. Strong winds can make it difficult to control this product. Be aware of weather conditions before installation.

Air Pump - Use an air pump recommended for inflating your product. For products this size, use of a high-volume electrical pump is best. Air pressure requirements are low – 5.0psi (0,35bar) or less. Air compressors designed for high-pressure inflation are not recommended because they can easily lead to over-inflation.

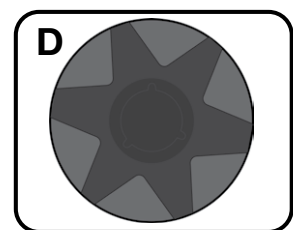
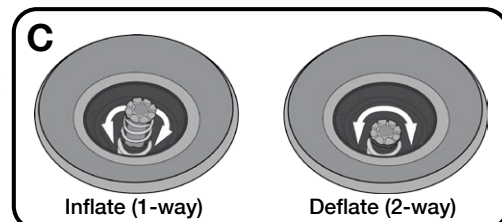
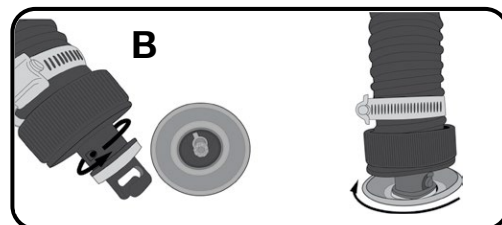
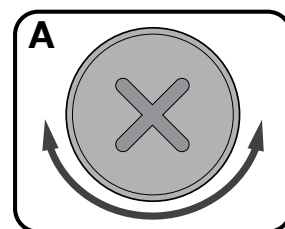
Valve(s) – This product uses Halkey Roberts – type (HR) valves. Valve attaches to product using a threaded backing plate making it easily replaceable in the unlikely event of damage.

Access valve using a coin or flat tool to twist the tamper-resistant cap counter-clockwise. To close, insert the cap and twist clockwise using the same tool. Note: cap is the secondary air seal. See A.

To inflate, an air pump with Halkey Roberts – type (HR) valve fitting is required. Insert fitting into valve and twist clockwise to lock in place. See B.

Valve Operation: To operate Halkey Roberts – type (HR) valve, press plunger and turn 90 degrees to set valve for inflate and product use (plunger out = 1-way airflow). Press plunger and turn 90 degrees to deflate (plunger in = 2-way airflow). Note: valve is primary air seal. After inflation, close with cap for secondary seal. See C.

Pressure Release Valve: Product is fitted with a pressure release valve (PRV) in critical chamber(s) to help provide catastrophic protection against damage caused by over-inflation. It is still necessary to check and regulate air pressure to maintain proper working pressure levels. PRV has a unique setting specified to release above, and to close near working pressure. PRV attaches to product using a threaded backing plate, making it easily serviceable. See D.



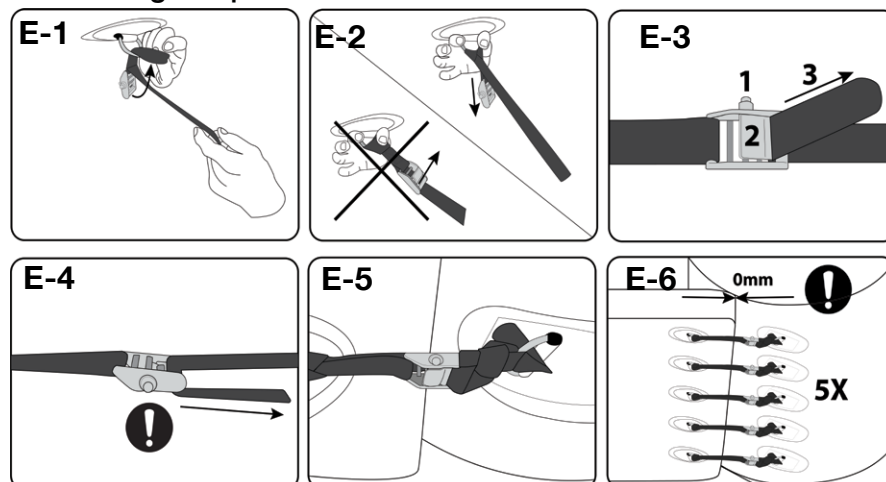
Proper Working Pressure for each chamber is listed below. Do not overfill or underfill. Excessive pressure can cause damage to the product and may void the warranty. Do not use without adequate air pressure. Product can become unstable if underfilled and may not support indicated capacity. Use a pressure gauge (manometer) to carefully monitor air pressure in the product especially during hot or cool periods.

Chart 1 – Working Pressure by Chamber - KING OF THE MOUNTAIN

Valve [Inflate Order]	Working Pressure in psi (Bar)
MAIN [1]	1.0psi (0,069 bar)

1. Locate a flat, dry area with access to outlet for electrical pump. The best setup position will also make launching easy. Never drag product as damage may occur.
2. Unfold product completely and locate Main Valve [1]. To help future storage, closely note original folding & packaging method. Remove valve cap and confirm valve is in inflate (1-way airflow) position.
3. Insert air pump hose with proper valve fitting into Main Valve [1], lock into place. Use pump to inflate Main Valve [1] to Working Pressure as shown in Chart 1.
4. If optional King of the Mountain Slide is to be installed, now is a good time to install it. Please refer to Slide instructions for additional details. If not, proceed to the next step.
5. Confirm that suitable anchor(s) and mooring lines are in place before launching this item (see Anchoring).
6. To launch product, lift completely and place in water. Large items may require many extra people to accomplish this. Never drag product as damage may occur.
7. When connecting multiple items together, always follow manufacturer's recommendations. Use only Aquaglide Two-Step Vario-lock cinch straps and connecting rings. Make sure connection is tight and there is NO GAP between items. Failure to connect items properly may result in injury or death. See E1 - E6.
 - a. Attach straps to 'Boarding Features' (example: Swimstep, Splashmat, Speedway, Breezeway or Deck) where a connection is required. Boarding Features should not be attached to other Boarding Features.
 - b. Use all available rings to make connection. Standard connections use 5 rings. Some items use 3 or occasionally 7 rings/ straps. KING OF THE MOUNTAIN is a Main Feature item with 5-ring connections on 3 sides.
 - c. Float 'Boarding Feature' into desired position. Note: a matching set of connecting rings is required on feature item.
 - d. Attach center strap to center ring on feature item. Connect loosely, then work outward until all straps are connected.
 - e. Dive beneath to tighten all straps securely. Dive mask and several attempts may be required.

Connecting Strap instructions



ANCHORING

Proper anchoring is essential to the safety and performance of this product. We recommend using Aquaglide mooring lines and weight recommendations as a starting point. Weight recommendations are intended to keep products in place during a normal range of weather conditions faced by most aquaparks. Even in so-called light-wind areas, storms, squalls and other extreme weather events can happen quickly. If improperly anchored, product can move and/or float away. Aquaglide is not responsible for damage, injury or loss due to improper anchoring.

Open Water: (General guidelines - not intended to replace need for professional installation)

1. Place product in an area protected from wind and boat traffic. Confirm allowances for stated minimum water depth, safe distance away from hard objects and vertical clearance requirements.
2. Consider prevailing conditions such as wind, waves and other environmental factors in positioning this item. Inflatable items can be unstable in strong winds. Slide faces are best positioned toward a breeze, not across it. Check water and seabed for sharp or dangerous objects.
3. Keep product a safe distance from docks, boats, boat lifts, and any other structures. To prevent potential damage to product, injury or death, NEVER tie the product to a dock.
4. Use one vertical mooring line for each anchor ring with an appropriate weight anchor, ground screw, or earth anchor at base. For exposed anchorages or water depth greater than 20ft. (6m), bridles connecting two rings to one mooring line may be preferable.
5. Anchor weight recommendations are based on the maximum potential wind loads generated by each item at a wind speed of 26 knots (48 km/h, 30 mph). Weight recommendations are based on the apparent weight of concrete mooring blocks in either salt or fresh water. If significantly stronger winds are forecast, we recommend partially deflating larger items or removing items from the water for storage. Sites with potential for extreme weather, strong tides, currents, winds and/ or swell should consider using up to 50% additional weight or holding power.
6. Install anchors and mooring lines before inflating this product.

Anchor Details – KING OF THE MOUNTAIN	Qty/ Weight lb (kg)
Anchor rings on product	4
Recommended anchor qty	4
2-Way Bridle?	No
Recommended weight/ anchor	250lb (100kg)
Recommended total anchor weight	1000lb (400kg)

Commercial Pool:

1. Product placement in commercial pool should be checked carefully in advance to confirm allowances for the stated minimum water depth, safe distance away from hard objects (pool edge) and vertical clearance requirements. Most residential pools cannot meet these requirements.
2. Pool moorings typically use a minimum of 4 horizontal mooring lines made from heavy duty elastic. Additional horizontal moorings should be added to increase stability and as necessary for larger product groups.
3. Horizontal Moorings are usually attached to pool anchor eyes, such as those used to secure lane buoy lines. Adjust mooring lines to keep product(s) under tension at all times.

OPERATION

King of the Mountain is a floating play structure for use in water. The product is intended for active, supervised use by adults and children. Users climb the item using climbing rope, handles and footholds provided. Users may jump from the item into the water after making sure the area is clear of other users. Users may also choose to slide into the water feet-first when optional slide accessory is attached.

PVC surfaces are more slippery when wet, which can lead to loss of balance when walking or climbing. Sliding surfaces will work best when wetted first. Chemical treatments are available to reduce friction on sliding surfaces, but are generally not necessary if products are kept clean.

Maintain working pressure: Air pressure depends on temperature. Always confirm proper working pressure before and during use, as temperature changes may affect internal pressure. If the product shows signs of instability or loss of pressure, discontinue use until the product returns to working pressure and/or repairs are made.

Spread loads: Do not concentrate more than 300 lbs (136 kg) in one area during use.

Manage Winds/Thunderstorms: If strong winds (25 knots+) or thunderstorms are forecast, discontinue use. Remove the product from the water and secure or store it.

Check connections: Check regularly to confirm that all connections are secure. Replace connecting straps that show signs of wear.

Clean and maintain: Check regularly that the product is clean and that all handles and accessories work properly. Each site requires its own cleaning/maintenance schedule, but regular cleaning and periodic maintenance is necessary to ensure the full life of the product. Replace handles or accessories that show signs of wear.

Check moorings: Regularly check mooring lines and anchors, especially after extreme conditions. Replace any item showing signs of permanent wear or stretching.

CARE AND MAINTENANCE

Proper cleaning, maintenance, and storage is essential to help prolong the life of your product. Do not use petroleum-based cleaners on this product. Improper use of a pressure washer can damage or destroy the product.

Basic Cleaning: Use soft bristly brush or sponge with mild soap and fresh water.

Difficult Cleaning: For heavy stains, marine growth, algae, mold, dirt and oils check with your distributor, or on our website, Aquaglide.com for commercial-grade cleaning solutions. In general, be sure that any cleaning products are clearly labeled as safe for PVC.

UV Protectant: Long-term exposure to sunlight will reduce product life and can damage the product. Regularly apply a UV protectant to exposed surfaces to ensure the life of your product. The best time to begin applying UV protectant is when the item is clean and new. Repeat applications depend on site specifics. In temperate climates, apply 1-2 times per year. In tropical climates, monthly application is not uncommon. Find more information on professional-grade UV protectants from your distributor, or at Aquaglide.com.

Replacement parts: Items like valves, PRV's, handles, rings and other accessories can occasionally wear out and need replacement to maintain the full function of your product. Check with your distributor, or on our website, Aquaglide.com for available parts and replacement instructions.

STORAGE - Clean, Protect, Dry: Clean product and consider applying UV protectant before storage. UV protectant conditions the PVC material and will help protect against dirt accumulation during storage. Confirm product is completely dry before folding.

Deflate & Fold: Deflate product completely: Consider using electric pump in 'deflate' mode. Close valve to prevent air return. Fold deflated product in similar manner to original packaging. If uncertain, fold in thirds, then roll loosely toward the valve(s). Enclose product in original storage wrap, if included.

Storage: Store the product out of direct sunlight and protect from environment in a clean, dry location such as a sealed closet, crate or container to prevent against serious threat of rodent damage. When building or sourcing storage container, use original box dimensions as a baseline. Size up by at least 15-20% to allow for imperfect folding. Never store in a damp location or at temperatures below 40 F (4 C).

REPAIR INSTRUCTIONS

Despite the durability of this product, occasionally accidents happen. This product includes a repair kit with some matching repair materials to help. If you should need additional repair materials or advice, check with your distributor or on our website, Aquaglide.com for guidance. If you believe your product has a manufacturing defect, please submit a warranty claim before making repairs.

This Product is made with Duratex fabric-reinforced PVC. Inflate fully and swab with Windex or soapy water and a sponge to locate leak.

Self-Adhesive TPU Patch Repair – Ideal for emergency repairs.

1. With leak located, cut supplied patch (or Tear-Aid, Type B) patch using sharp scissors. Round corners (approximately ¼" radius). Patch should cover 1" (2.5cm) outside leak in all directions.
2. Use solvent such as MEK, Acetone or Alcohol to clean patch area. Dry completely.
3. Peel back paper backing to expose adhesive. Align patch and apply pressure. Peel back remaining paper backing. Avoid trapping air bubbles. Rub firmly from center outward.

Fabric Reinforced PVC with Glue Repair – Ideal for Duratex & dropstitch repairs. Optional Adhesive: HH-66, Aquaseal+FD.

1. With leak located, deflate product. Arrange work surface so that repair is most accessible.
2. Cut matching PVC patch material using sharp scissors or razor knife. Round corners (approximately ¼" radius). Patch should cover 1" (2.5cm) outside leak in all directions.
3. Use solvent such as MEK, Acetone or Alcohol to clean patch area and back of patch. Dry completely.
4. Use sandpaper to roughen patch area and back of patch.
5. Use solvent again to quickly remove sanding residue.
6. Dry fit patch and use pencil to outline location.
7. Use a small disposable brush to apply a thin, even layer of glue to patch area. Glue evenly up to pencil outline. Glue back of patch.
8. Allow glue to cure (30 - 60 seconds) – until surface glazes slightly.
9. Repeat 7-8 to add a second coat of glue in the same way.
10. Align patch using pencil outline as a guide. Once surfaces touch, bond will be immediate.
11. Apply patch, starting at one corner and working outward.
12. Rub firmly from center outward for 1 – 2 minutes.
13. Allow to cure for 2 hours, minimum. Cure 12 hours for full strength.



ACKNOWLEDGEMENT OF RISK AGREEMENT

By assembling and/or using this product, you are agreeing to: (1) Read and understand the terms set forth below and (2) to require anyone using this product to familiarize themselves with such terms.

ASSUMPTION OF RISK: Use of this product and any of its components involves certain inherent risks, dangers, and hazards which can result in serious personal injury and death. In using the product, you freely agree to assume, acknowledge, and accept any and all known and unknown risks of injury while using this equipment. The risks inherent in the sport can be greatly reduced by abiding by the Warning Guidelines listed in this Owner's Manual and by using common sense.

ARBITRATION: In further consideration of the sale to you of this product and any of its components, you hereby agree to submit to binding arbitration any and all claims which you believe you may have against Aquaglide arising from the use of any Aquaglide equipment or products. The arbitration shall be pursuant to the rules of the American Arbitration Association. Arbitration shall be commenced within (1) year from the date on which any alleged claim first arose. Further, the arbitration shall be held in Snoqualmie, Washington unless otherwise mutually agreed to by all parties. The arbitration award through the American Arbitration Association may be enforced by any Court of competent jurisdiction.

ENTIRE AGREEMENT: In entering into this Agreement, you are not relying upon any oral or written representations other than what is set forth in this agreement and the Aquaglide Owner's Manual.

WARRANTY

At Aquaglide we pride ourselves on first class customer service and brand integrity. We strive to manufacture our products to the highest quality standards and we proudly stand behind them. Despite our best efforts, occasionally a product may exhibit a manufacturing defect. If you believe your product has a manufacturing defect, please submit a warranty claim and await response before making any repairs. Once a warranty claim is submitted our staff will review your submission and deliver a prompt resolution.

It is always our primary intention to treat each customer fairly.

Commercial Products

Commercial products are those that are specifically intended, designed, and sold for commercial purposes including independent operators, camp, or municipal use (example, a city pool). Commercial products are normally exposed to a greater number of users and higher level of use.

Warranty Coverage – Commercial Products

Product warranty covers all critical manufacturing defects including general workmanship, seam failures, and material failure due to manufacturing defects.

Warranty Terms

The warranty term for commercial aquapark products is (3) three years from date of purchase.

Commercial products under an approved warranty claim may be repaired or replaced, in part or entirely, at the sole discretion of Aquaglide. Commercial products in use for more than (2) years but less than (3) years may also be pro-rated based on condition and use for credit at the sole discretion of Aquaglide. Normal wear should be expected on consumptive parts such as straps, handles, ropes, footsteps and D-rings. Such items are easily repairable and may or may not be replaced under warranty depending on the cause of failure.

For consumers covered by specific protection laws and/ or regulations in country of purchase or residence, the benefits conferred by this Aquaglide Warranty are in addition to all rights and remedies conveyed by such laws and regulations including, but not limited to, these additional rights.

What is NOT Covered Under Warranty?

- Normal wear and tear
- Freight damage (freight claim must be filed to cover shipping damage)
- Damage while in storage (freeze or other damage)
- Repairable cuts, punctures, or tears due to external forces
- Damage caused by sharp object when opening boxed product
- Damage caused by dragging product
- Damage caused by exceeding the maximum weight and/ or user capacity
- UV Damage without proper treatment (material breakdown, fading)
- Damage, or failure due to over-inflation including thermal over-inflation from sun exposure
- Vandalism or intended damage
- Product failure due to force majeure, acts of God, or inclement weather
- Improper maintenance and/or cleaning
- Damage caused by animals or plants including marine growth
- Damage caused by chemicals or poor water quality

Warranty Claim Requirements

1. Dated proof of purchase or original invoice, for original owner.
2. High resolution photo or video showing serial number (where relevant).
3. High resolution photo or video showing entire product.
4. High resolution photos or video of defective portion of product. If leaking, show leak with and without soapy water.

Warranty Claim Submission

In the United States, warranty claims may be submitted by end consumer or retailer at **www.aquaglide.com/warranty/**. Please gather the information in claim requirements and submit warranty claim electronically.

Outside the United States please gather the information in claim requirements and submit warranty claim through your dealer or national distributor.

Enter clear and complete information including your contact information. Once a claim is submitted our team will make every effort to address it promptly.